

MONTHLY MEMBERSHIP PROGRESS REPORT

District 4 A2

Results as of: 5/31/2024

GMT:

LOCATION CALIFORNIA

GMT CA

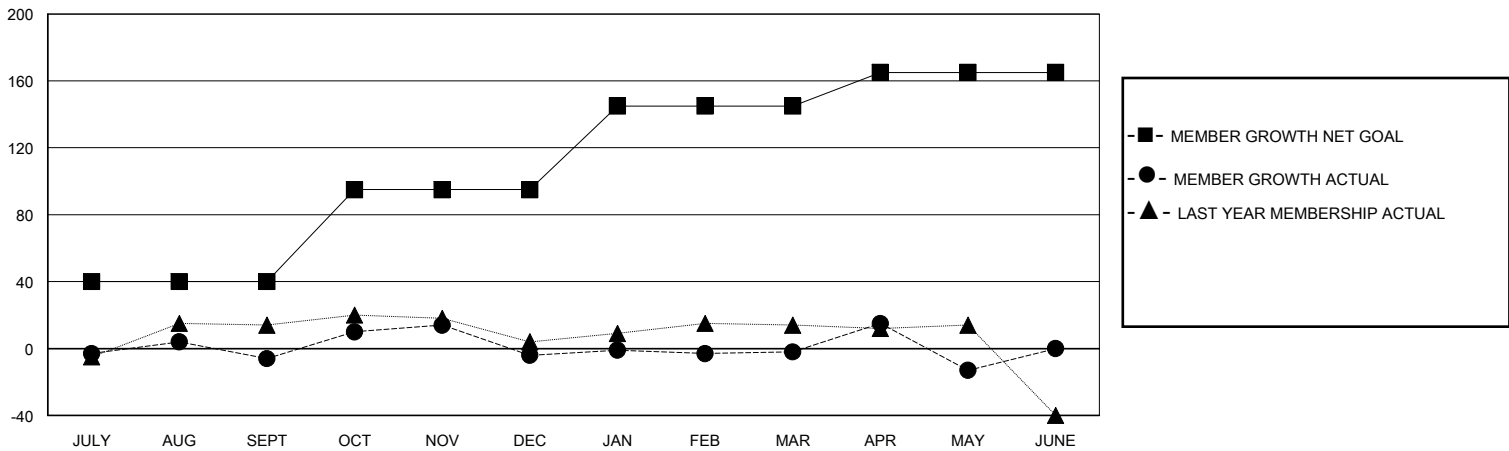
Clubs			
RESULTS FOR 2023-2024			
QUARTER	NEW CLUB GOAL	NEW CLUBS	DROPPED CLUBS
JULY/AUG/SEPT	0	0	0
OCT/NOV/DEC	0	0	1
JAN/FEB/MAR	1	0	0
APR/MAY/JUNE	0	0	0

Members			
RESULTS FOR 2023-2024			
QUARTER	MEMBER GROWTH NET GOAL	MEMBER GROWTH ACTUAL	DROPPED MEMBERS ACTUAL (including transfers)
JULY/AUG/SEPT	40	49	46
OCT/NOV/DEC	55	53	45
JAN/FEB/MAR	50	36	29
APR/MAY/JUNE	20	58	67

GOALS AND ACTUAL NEW CLUBS CUMULATIVE



GOALS AND ACTUAL MEMBERS CUMULATIVE



DROPPED CLUBS: 1

29 CLUBS OF 63 ADDED 1 OR MORE NEW MEMBERS

GENDER DISTRIBUTION

MALE 1,206 (70.08%)
FEMALE 512 (29.75%)

DROPPED MEMBERS

DECEASED	20
CLUB CANCELLED	1
OTHER	167
TOTAL	188

[CLICK HERE FOR CUMULATIVE MEMBERSHIP DATA](#)

TOTAL FAMILY UNIT MEMBERS	272
FAMILY MEMBERS PAYING HALF DUES	144